



AFAD

Dr. Murat NURLU



CONTENT;

1. *Introduction to AFAD*
2. *Seismicity of Türkiye*
3. *EReS Project Site (Türkiye)*
4. *Preparations*
5. *Project Organisation*
6. *Planned Activities*



REPUBLIC OF TÜRKİYE- MINISTRY OF INTERIOR
DISASTER AND EMERGENCY
MANAGEMENT AUTHORITY

AFAD

AFAD is the sole governmental authority responsible from disaster and emergency management topics established under Ministry of Interior. In addition to central organisation, AFAD has 81 provincial units and 11 SAR units. Total number of staff is approximately 6.000.

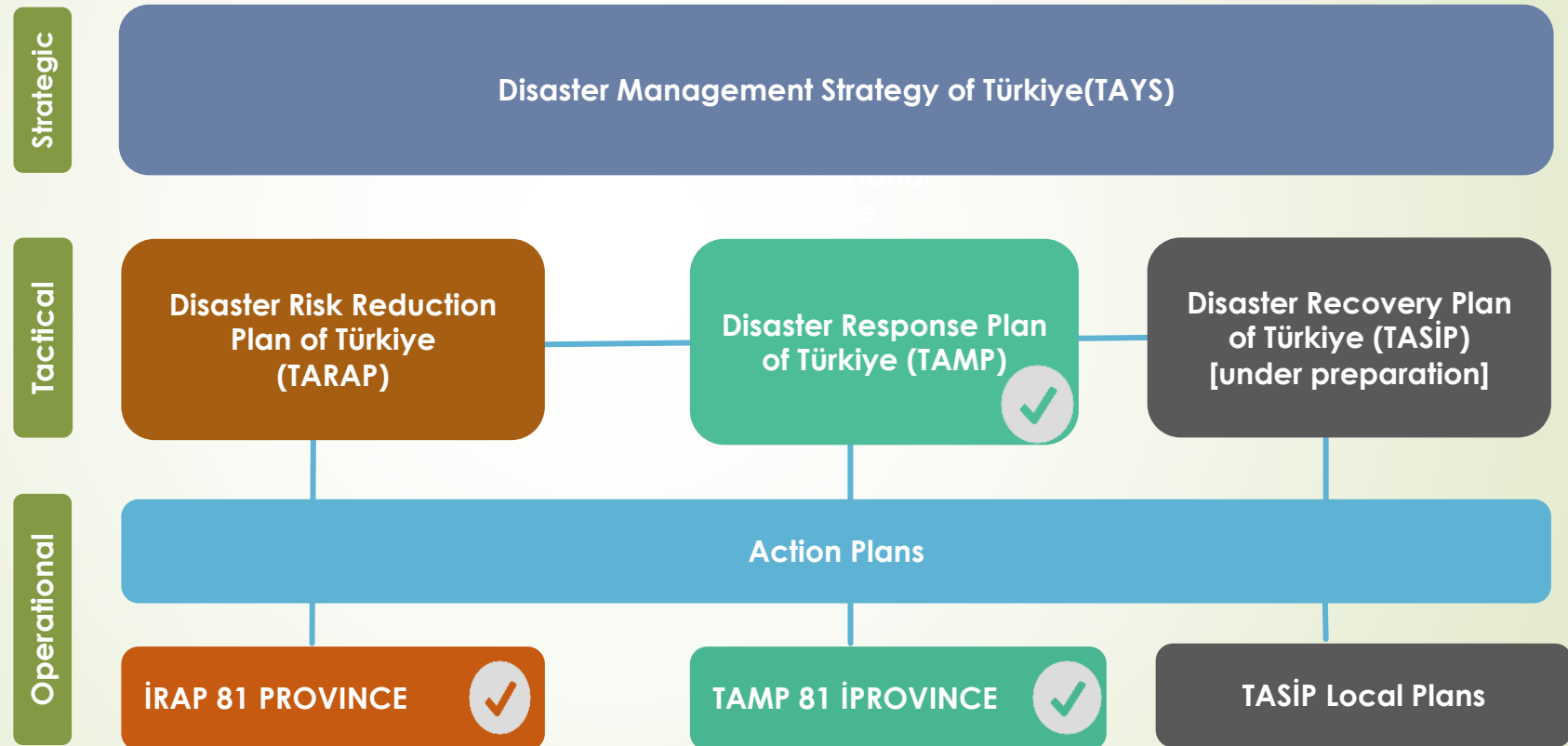


AFAD has responsibilities at every stage of disaster management cycle (including planning, risk reduction, preparation, response and recovery) and administrative scheme has been designed accordingly.



AFAD

AFAD prepared several national level strategies and plans in order to better co-ordinate and implement disaster and emergency management topics.

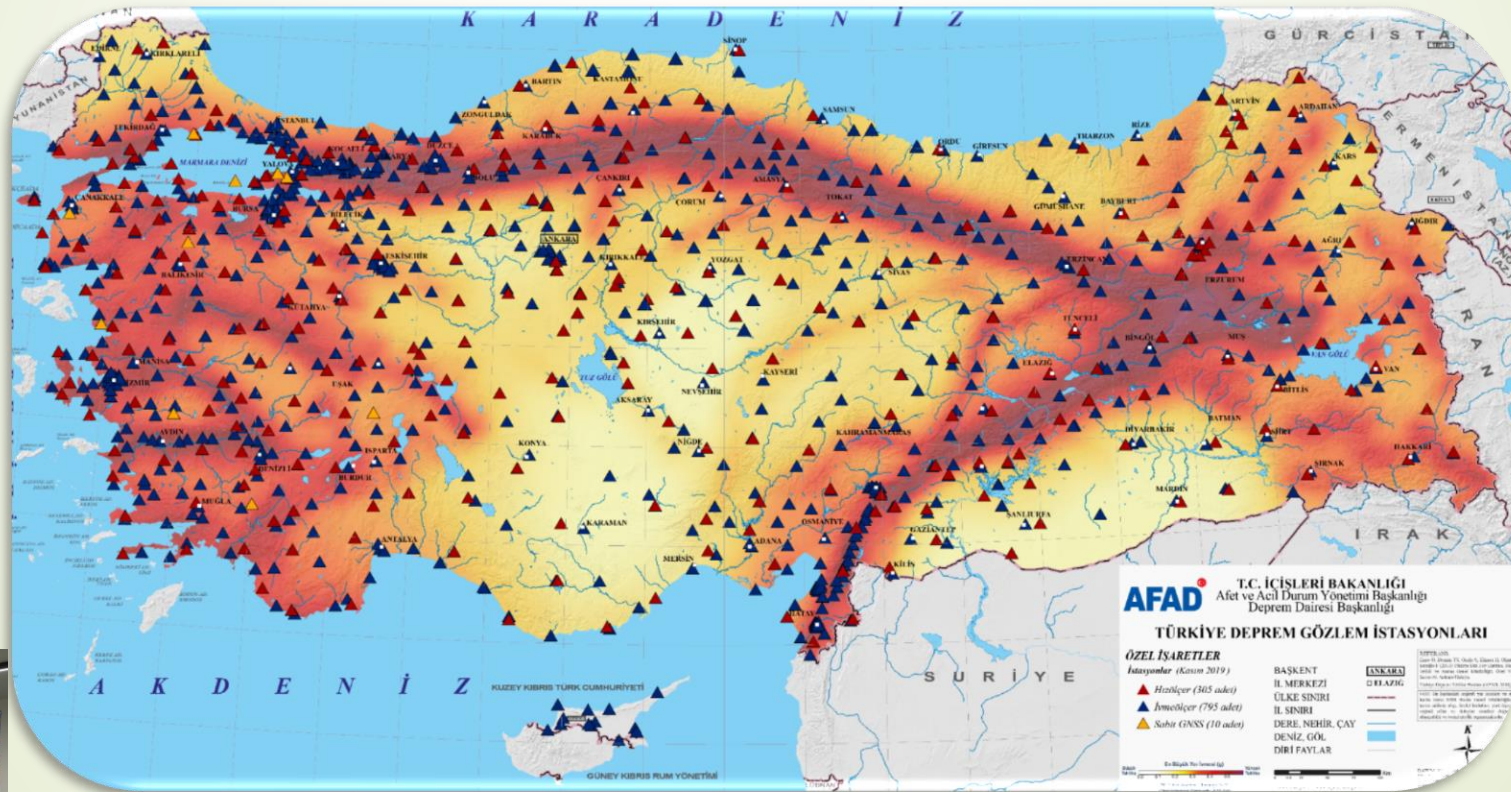


In addition to above plans, National Earthquake Strategy and Action plan (UDSEP-2023) have been operational since 2011.



AFAD (Earthquake Department)

AFAD Earthquake Department is the sole national authority to operate national level earthquake observation network in Türkiye. In addition national level earthquake hazard maps and building codes are prepared by AFAD Earthquake Department. The Department conducts several nationally and internationally owned projects in the field of earthquake risk management like risk reduction, awareness and preparation.



317
Broadband

+

826
Accelometer

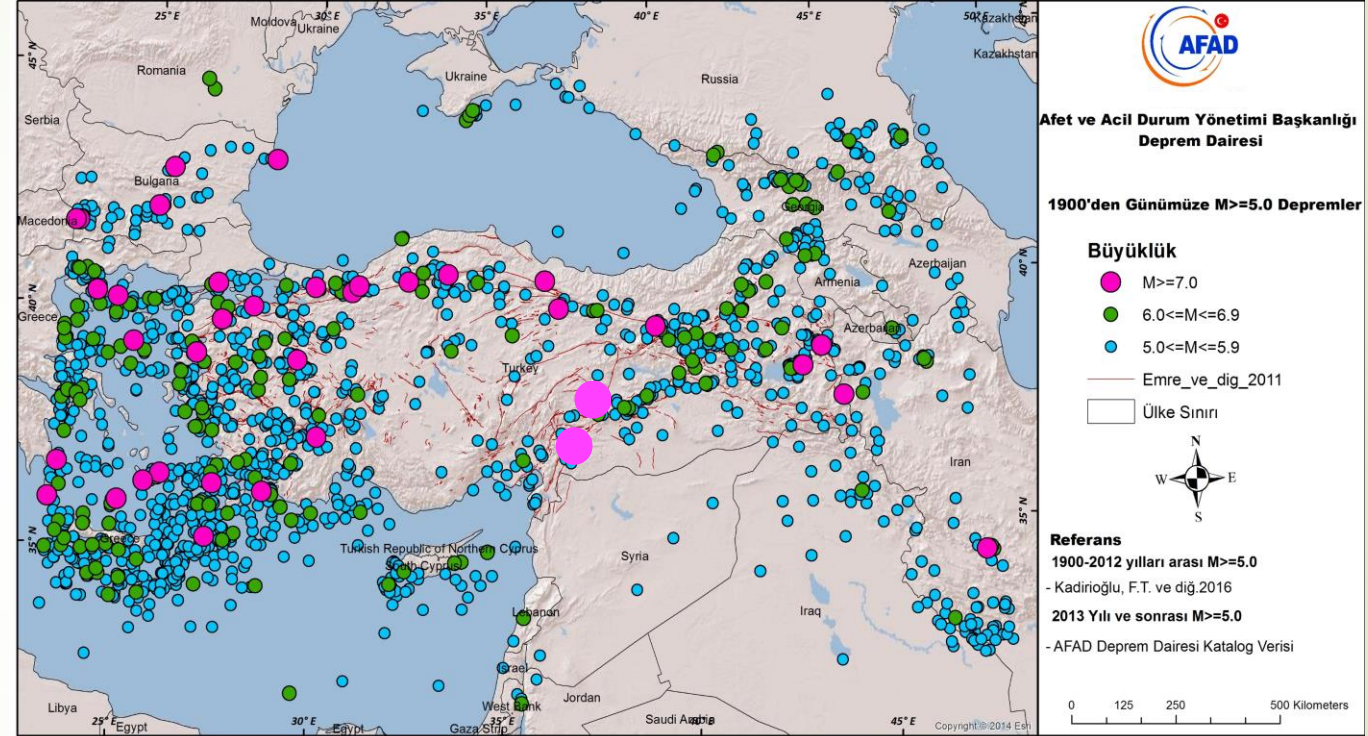
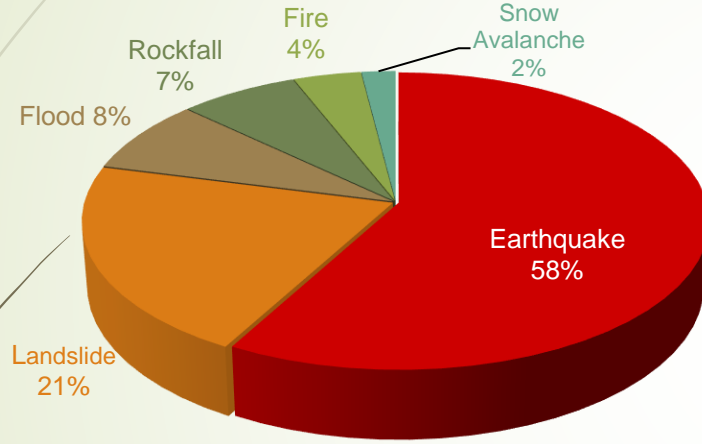


1.143
Earthquake
Observation
Station

AFAD operates the second biggest seismic network in Europe including seismometers, GNSS, etc.



Seismicity of Türkiye



Earthquakes are the most destructive hazard type in Türkiye. 25.000 annual earthquake calculated in Türkiye. Between 6 February – 01 May 2023 approximately 32.000 aftershock calculated following the earthquake doublet (Kahramanmaraş Earthquakes, 06 February 2023). From 1900, 248 destructive earthquakes occurred in Türkiye with 138.000 loss of lives and almost 1.000.000 destruction.



EReS Project Area (Türkiye)

Çanakkale

74.757
Students
4.459
Teachers

333
schools
3721
classrooms

559383
people 9737
km²
12 provinces

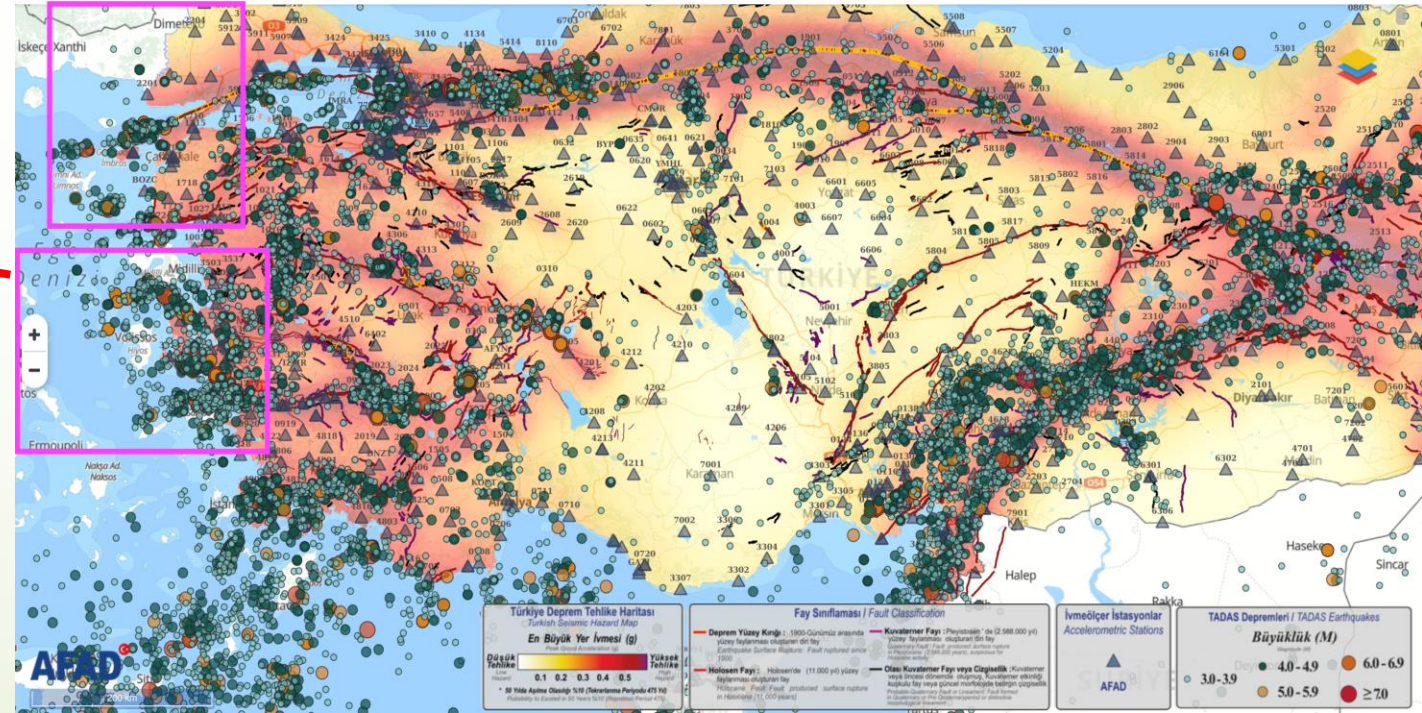


e-Devlet [İçişleri Bakanlığı](#) [AFAD Başkanlığı](#) [English](#) [Türkçe](#) [Logout](#)

AFAD

R.T. MINISTRY OF INTERIOR
Disaster and Emergency Management Presidency
Department of Earthquake
Türkiye Kuvvetlendirme Veritabanı ve Analiz Sistemi

[Map](#) [Station](#) [Waveforms](#) [Events](#) [Geographic Info](#) [Other Infos](#)



İzmir

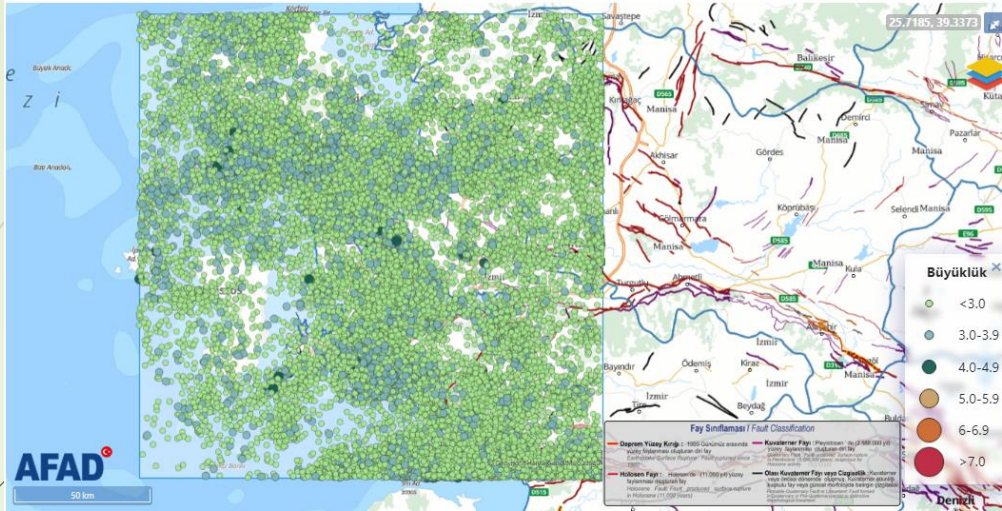
1814
Schools
21525
Classrooms

668.022
Students
42.678
Teachers

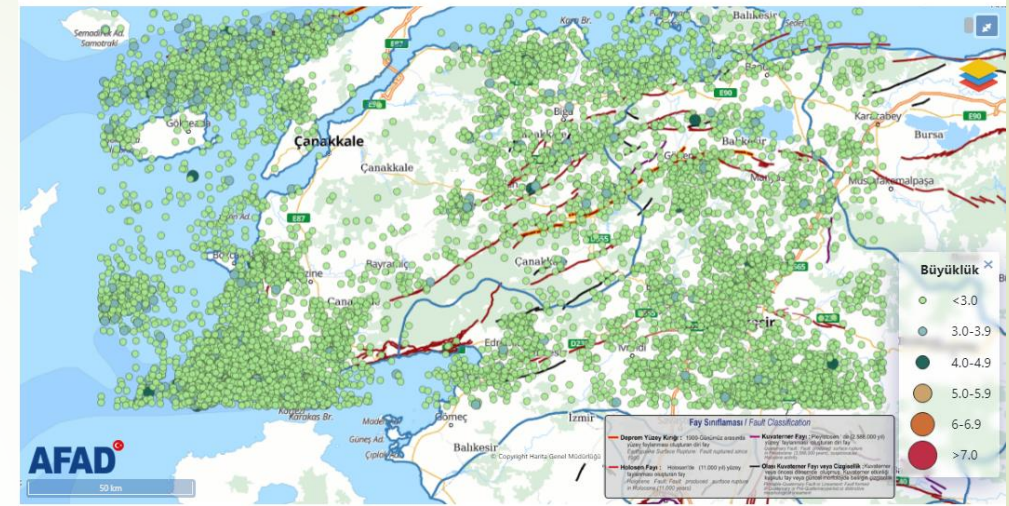
4425789
people
12.000 km²
30 province



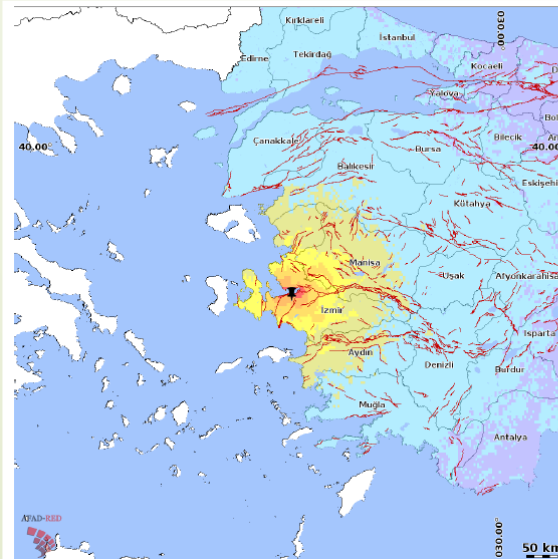
EReS Project Area (Türkiye)



Total number of earthquakes in the extended study area is: 85.088



Total number of earthquakes in the extended study area is: 15.297

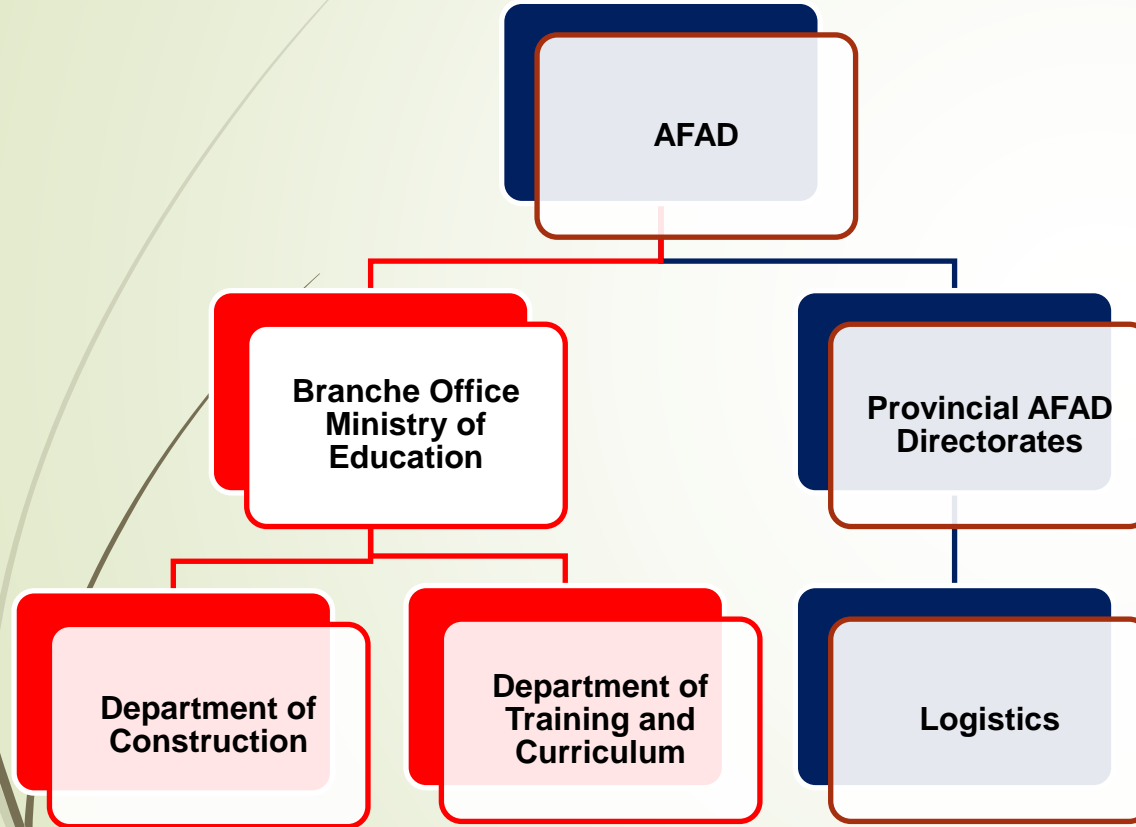


Preparations

- ❑ Databases of geology, active faults, demography, transportation, buildings, critical facilities have been started.,
- ❑ Preparations for the earthquake catalogues have started. Existing strong motion database preparations have started,
- ❑ Evaluations for test schools;
 - ✓ Determination of schools to be affected by using scenario outputs of AFAD-RED,
 - ✓ Selection of schools on three different soil conditions (alluvial, sedimentary, volcanic ??),
 - ✓ Construction year, type of construction, height, consistency with the Project ?
 - ✓ First communication with local partners started (Provincial AFAD Directorates, Provincial Directorates of Education),
- ❑ Realtime earthquake data transfer to GTU from pilot stations started,

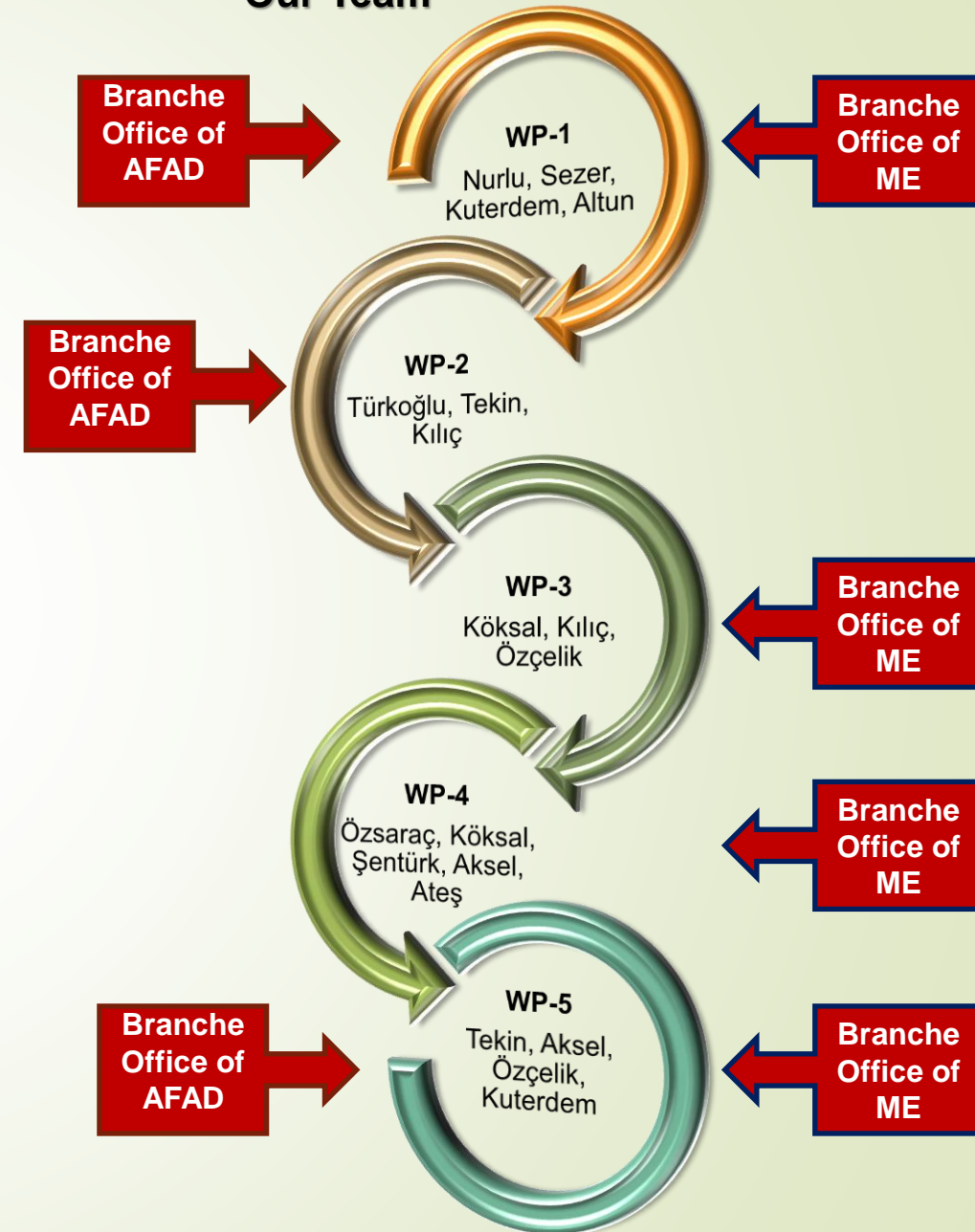


Project Organisation



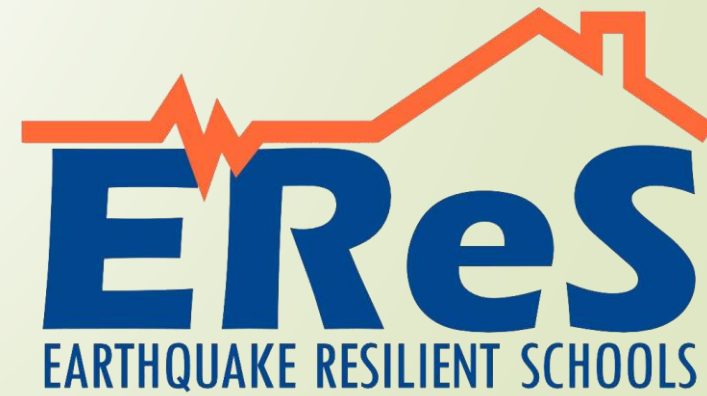
Collaborating Agencies

Our Team



Planned Studies

- ❑ *Conclusion of planned activities until September 2023,*
- ❑ *On-line and/or in-situ meetings with local authorities until September 2023 (confirmation of local support, information dissemination on project goals),*
- ❑ *Investigation of test schools with GTU until September 2023,*
- ❑ *Establishment of low cost sensors (if procured) to test schools, planning of field activities with GTU until the end of 2023,*
- ❑ *Planning of training and educational activities for school based education activities in coordination with local authorities until September 2023,*
- ❑ *Organisational activities for the project presentation at local level until 2023.*





Thanks for your kind interest

Dr. Murat NURLU